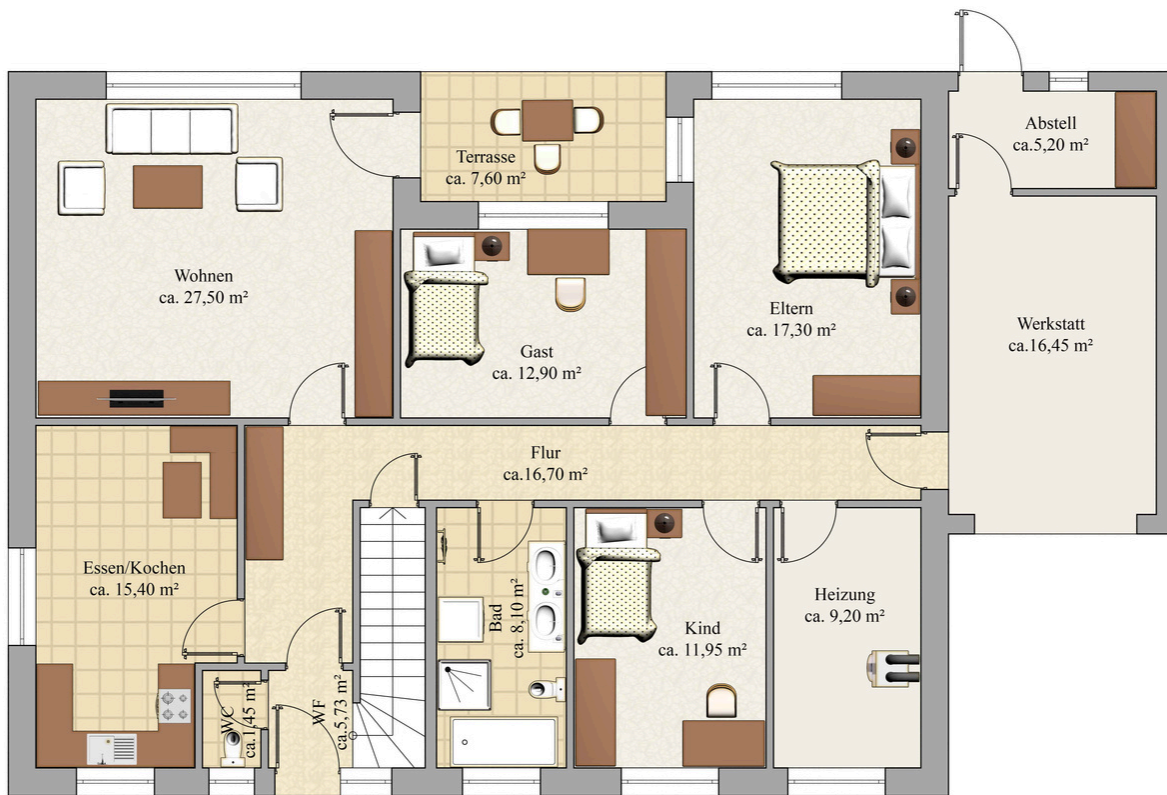


11.14  
4.91  
12  
5.27  
4.3

17.98  
4.3 5.50 12 4.40 12 3.50 4.3 3.20 30



0 5m

4.3 2.45 12 90 12 2.42 18 2.00 12 2.96 12 2.27 4.3 3.20 30  
14.48 3.50

11.14  
5.03  
12 1.15 12  
4.01  
4.3